



GARUD SURVEY™

THE DRONE SURVEY COMPANY

108, MIIC, JLN MARG, JAIPUR -302017, RAJASTHAN

INFO@GARUDSURVEY.COM

WWW.GARUDSURVEY.COM

ABOUT US

We are India's fastest growing drone survey company. We are a team of passionate professional with more than four year of experience. Our Drone Survey enable you to take better decision with high resolution aerial data, Our UAV Expertise helps customers to access complex and hard to reach locations that would otherwise take more time and money to see using conventional methods.

WHY DRONE SURVEY



Faster Technology



AI-Powered Data
Collection



AI-Data Processing

TAKE YOUR PROJECT TO NEW HEIGHTS



Empower People



Reduce Risk



Digitize Work

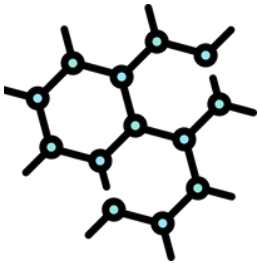
WHY GARUD SURVEY

DATA CLOUD ACCESS



- We can provide you Drone Results Data on Cloud.
- You can access your site in your laptop & you can measure the each & every dimensions from your self.
- you can export the results you require and you can use each measurement tool i.e area, length, volume, etc.

DRONE PILOTS NETWORK



- We are associated with Drone Pilots Network where we can provide you Our Drone Pilot Team at any location.
- This tool will help you in fast execution for your project and it will impact on the costing of the project.
- This tool will help you for proper execution in data collection, who follow the standard operation procedure.

VISIONARY EXECUTION



- Our Company's Executives are those leaders who believe in making the vibrant impact on customer's project positively.
- We are continuously upgrading our Drones and Drone Data Processing System to ease the the customer's project.
- We are investing more than 29% of total capital on R&D to make your project easy and accurate.

DATA PRIVACY ASSURANCE



- Your Data is your assets and we care for your assets.
- We provide you 100% Assurance for your data privacy.
- When you take cloud access of your project site, we provide you a fully password protected system.

APPLICATIONS



MINING

- STOCKPILE ANALYSIS
- MINES PLANNING
- HAUL ROAD ANALYSIS
- CUT-FILL ESTIMATIONS
- BLAST MONITORING
- MINING INSPECTION

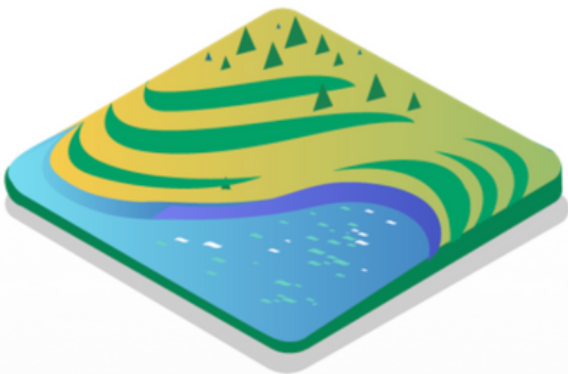
UTILITIES

- POWERLINE INSPECTION
- TRANSMISSION INSPECTION
- PIPELINE MAPPING
- SOLAR PANEL THERMAL INSPECTION



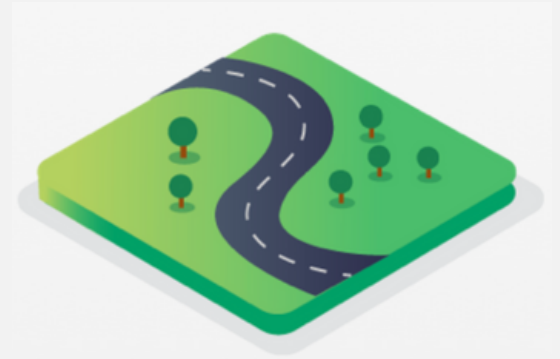
INSPECTION

- TOWER THERMAL INSPECTION
- ASSETS INSPECTION
- TRAFFIC INSPECTION
- PROJECT-PROGRESS INSPECTION
- BRIDGE INSPECTION
- RAILWAY TRACK INSPECTION



AGRICULTURE

- PLANT HEALTH INSPECTION
- AI- CROP DETECTION
- IRRIGATION MONITORING
- CROP INSURANCE REPORT
- GROUND WATER SURVEY



HIGHWAY & RAILWAY

- TOPOGRAPHIC ANALYSIS
- ASSETS MAPPING
- GIS-MAPPING & 3D MODELLING
- AERIAL VIDEOGRAPHY



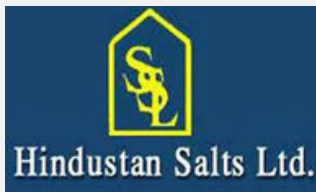
CONSTRUCTION

- PRE-CONSTRUCTION PLANNING
- POST-CONSTRUCTION PLANNING
- URBAN PLANNING
- DRAINAGE PLANNING





OUR CREDENTIALS





Government of Rajasthan
**DEPARTMENT OF MINES
& GEOLOGY**





GARUD SURVEY PRIVATE LIMITED

HEAD OFFICE: 108, MIIC, JLN MARG, JAIPUR -302017, RAJASTHAN

REGISTERED OFFICE: F-11, PANWAR TOWER, GOVT. PRESS ROAD BIKANER.

INFO@GARUDSURVEY.COM
WWW.GARUDSURVEY.COM

+91-7733911999, +91-7230911999